

Cambrian School District

Steindorf STEAM School - Shade Structures



March 2022



USASHADE
& Fabric Structures®

Erik Anslinger
Architectural Specialist
(408) 478-1646
erik.anslinger@usa-shade.com

Steindorf STEAM School



DSA PC Single Post Pyramid Shade Structure

Model# DSA1032020-19

Size: **20' x 20'**

Entry Height: **12' Max.**

ROM Price: **\$20,000 - \$22,000 per unit**

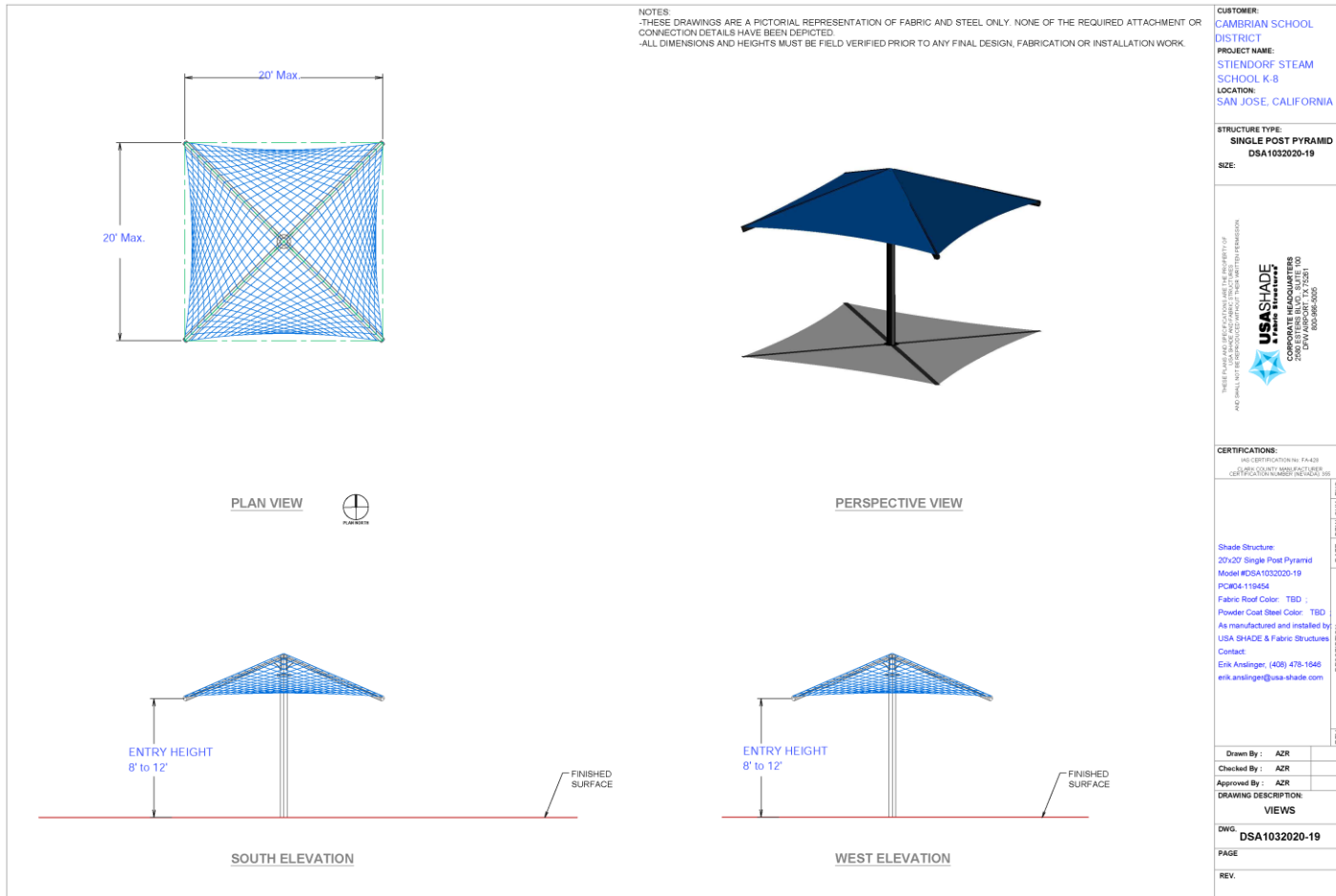
- Pricing includes engineering, materials, prevailing wage installation (including foundations), tax, and freight.
- Pricing assumes standard drilled pier footings, Colourshade® FR HDPE mesh fabric, and standard powder coat color.
- Pricing excludes permits, permit fees, special inspections, and costs related to unforeseen underground obstacles.



USASHADE
& Fabric Structures®

Erik Anslinger
Architectural Specialist
(408) 478-1646
eanslinger@usa-shade.com

Steindorf STEAM School



Erik Anslinger
 Architectural Specialist
 (408) 478-1646
 erik.anslinger@usa-shade.com

Steindorf STEAM School



Four Post Hip Fabric Shade Structure

PC Model# DSA401203012-19

Size: **20' x 30'**

Entry Height: **12' Max**

ROM Price: **\$27,000 - \$29,000**

- Pricing includes engineering, materials, prevailing wage installation (including foundations), tax, and freight.
- Pricing assumes standard drilled pier footings, Colourshade® FR HDPE mesh fabric, and standard powder coat color.
- Pricing excludes permits, permit fees, special inspections, and costs related to unforeseen underground obstacles.

Erik Anslinger

Architectural Specialist

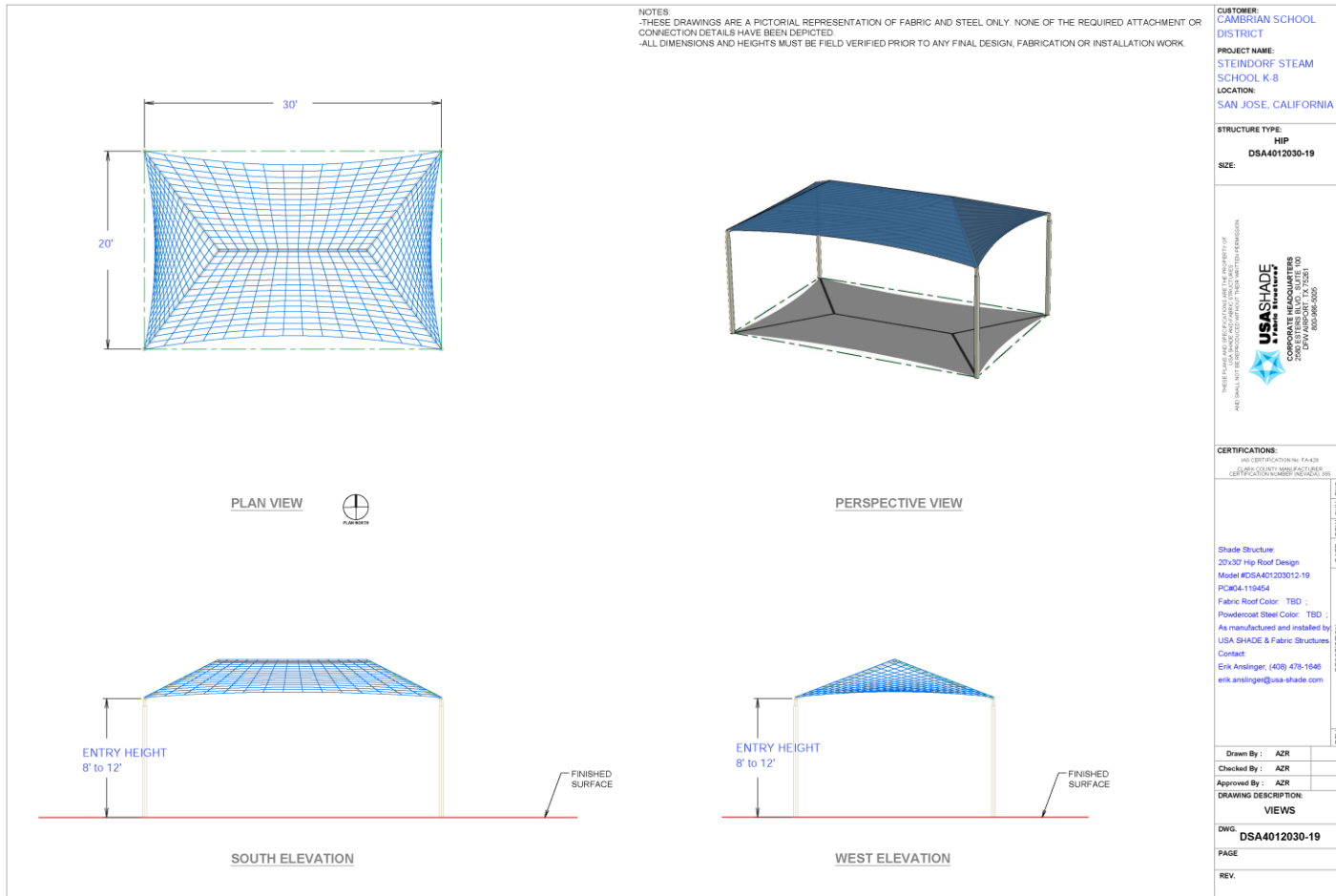
(408) 478-1646

erik.anslinger@usa-shade.com



USASHADE
& Fabric Structures®

Steindorf STEAM School

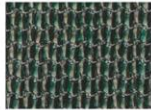


Erik Anslinger
 Architectural Specialist
 (408) 478-1646
 erik.anslinger@usa-shade.com

COLOURSHADE®FR FABRIC



BLUE
SHADE 80%
UV 85%



GREEN
SHADE 80%
UV 85%



RED
SHADE 80%
UV 86%



TERRACOTA
SHADE 75%
UV 82%



DESERT SAND
SHADE 80%
UV 92%



YELLOW
SHADE 80%
UV 89%



SILVER
SHADE 80%
UV 81%

Colourshade® fabrics carry a 10 year limited manufacturers warranty from the date of installation against failure from significant fading, deterioration, breakdown, mildew, outdoor heat, cold, or discoloration, with the exception of the Red fabric which carries a 3 year limited warranty.



USASHADE
& Fabric Structures.

www.usa-shade.com

Corporate Headquarters
DFW International Commerce Park
2580 Esters Blvd, Suite 100
DFW Airport, Texas 75261
PH: 214.905.9500
TF: 800.966.5005

West Coast Office
PH: 714.427.6981

Southeast Office
PH: 214.905.9500

Copyright © 2019 by Shade Structures, Inc. All rights reserved.

STANDARD POWDER COAT COLORS



BLACK
115618BLK



COBALT
115618CBB



BLUE
115618BLU



FOREST GREEN
115618FRG



RED
115618RED



YELLOW
115618YLW



DARK BROWN
115618DBW



LIGHT IVORY
115893



WHITE
115618WHT



TELE-GRAY
115892

Powder coating provides maximum adhesion, UV protection and fade resistance. Available in a wide range of colors, this coating has higher surface hardness/scratch resistance than common liquid paints.

Powder coat colors may vary slightly based on the media of which flyer is printed out on or distributed as PDF.



USASHADE
& Fabric Structures.

www.usa-shade.com

Corporate Headquarters
DFW International Commerce Park
2580 Esters Blvd, Suite 100
DFW Airport, Texas 75261
PH: 214.905.9500
TF: 800.966.5005

West Coast Office
PH: 714.427.6981

Southeast Office
PH: 214.905.9500

Copyright © 2019 by Shade Structures, Inc. All rights reserved.



USASHADE
& Fabric Structures®

Erik Anslinger
Architectural Specialist
(408) 478-1646
erik.anslinger@usa-shade.com