

Prop 28 CSD Visual Arts Program Expansion Board Update

May 1, 2025



"Exploring Infinite Possibilities for Learning"

Creating and producing art is central to the human experience. Art allows people to feel and express the range of human emotions, art connects people to one another and to their local and global communities. For many, an arts education is only the beginning of a lifelong appreciation and enduring sensitivity to the way the arts enrich lives. Join us on our adventure to renew a formal arts education in CSD.



Units of Study



Our Teachers



Student Work

The Importance of Arts Education

EQUITY: Arts classrooms are places where ALL students can thrive/succeed, regardless of social, economic, or cultural (including linguistic) status.

BELONGING: Arts education helps students form their identities individually and as members of larger collaborative groups.

ENGAGEMENT: Arts learning provides positive, joyful occasions for parents and families to meet as part of the school community.

Read more about the **Benefits of a Standards-Based Arts Education** in Chapter 1 of the Arts Education Framework.

California Arts Education Framework for California Public Schools, Chapter 1

How has arts education benefitted your student(s) and family?

The Critical Components of Strong Arts Programs

FUNDAMENTAL ARTS EDUCATION COMPONENTS

- Staffing:** Administrators, other personnel such as arts coordinators, resource teachers, counselors, support staff, and teachers encompassing the 5 different arts disciplines (dance, media arts, music, theatre, and visual arts) are provided.
- Standards-Based Curriculum:** Articulate the sequence of instruction and arts learning expectations for students at each grade level.
- Scheduling:**
 - Discrete instruction in each arts discipline necessary to build foundational literacy, language, knowledge, and skills is provided in elementary school.
 - Scheduling ensures students can deepen knowledge of one arts discipline or can access multiple arts disciplines in middle school and high school.
 - High school scheduling ensures that all students have access to advanced level courses every year.
- Facilities:** Appropriate and dedicated facilities and classrooms for safe learning in the arts, including storage to secure equipment and supplies are provided and maintained.
- Safety:** Safety protocols are in place to support the health and safety of students and teachers.
- Arts Materials and Supplies:** Students have access to appropriate arts materials and supplies and there is a dedicated budget to purchase materials and supplies and maintain arts equipment and inventory.

California Arts Education Framework for California Public Schools, Chapter 9

What access to arts learning during the school day does

Artistic Literacy

ARTISTIC LITERACY

Artistic literacy is the ability to **understand, create, perform/present/produce, respond, and connect** through the arts, and transfer knowledge and skills learned from authentic experiences in the arts that transcend historical, cultural, and societal contexts.

California's vision of artistic literacy is grounded in the philosophical foundations of the arts standards which provide a foundation for artistic literacy.

Involvement in the arts contributes to the creation of lifelong learners who are prepared to accomplish their own goals in life and participate collaboratively in a global community.

The Arts as Communication

The Arts as Creative Personal Realization

The Arts as Culture, History, and Connectors

The Arts as a Means to Wellbeing

The Arts as Community Engagement

The Arts as Profession

How have these philosophical foundations played out in your life?



Ms. Kaplan
Art Teacher

Born and raised in the Bay Area, Ms. Kaplan is drawn to creativity and the outdoors. With a degree in Studio Arts from UCSC and a Master's in Education, she blends her passion for art with a love for teaching. When not working Ms Kaplan is an avid rock climber, hiker, and enjoys surfing.



Ms. Mily
Paraeducator

Ms. Mily has worked for the Cambrian School District for over 8 years including support for special education. She is excited to be part of the Cambrian SD Arts Department, working at Bagby, Sartorette and Farnham school sites.



Mr. Palma
Art Teacher

Born and raised in the Bay Area, Mr. Palma has worked in education for over 20 years and is a graduate of UCSB, CSU Fullerton, and SCU. Mr Palma loves art, design, music, and always learning. He holds credentials in Art, Engineering, Woodworking, and Home Economics.



Ms. Serena
Paraeducator

Ms. Serena has been working in the Cambrian School District for over 10 years. She loves art and photography, a passion fostered from her childhood in Europe. Ms Serena cherishes the close-knit community in Cambrian where her family has lived for over 26 years.



Prop 28 Arts & Music In School

Funding and Accountability Act Background Information

As a condition of receiving funds, LEAs must do the following annually:

- ❑ Certify that funds are used to provide arts education, and that funds expended in the prior fiscal year were used for that purpose.
- ❑ Certify that funds received will be used to supplement funding for arts education programs and that funds received in the prior fiscal year were used for that purpose.
- ❑ Certify that no more than 1% will be used for an LEA's administrative expenses and that funds received in the prior fiscal year were used within that limit.
- ❑ Submit an annual report that describes the arts education programs funded and specifies how funds were utilized.

Prop 28 Allocations & Expenditures 2023 - 25

	2023-24	2024-25
Total Prop 28 Allocations	\$364,694	\$360,199
→ Salaries & Benefits ◆ 2.0 FTE Art Teacher ◆ 1.50 FTE Art Paraeducator	\$364,161	\$381,481
→ Materials & Supplies	\$532	\$0
→ Administrative Cost	\$0	\$0
Total Prop 28 Expenditures	\$364,694	\$381,481
CSD Base Contributions	\$0	\$21,282
*Contributions for Materials & Supplies Expenses (H&SC Donations)	\$20,666	\$20,000
Total Actual Expenditures	\$385,360	\$422,763

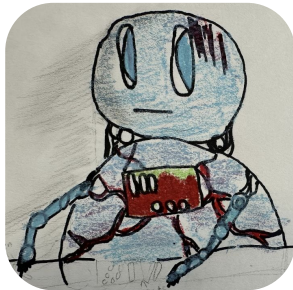
Proposed Prop 28 Expenditures for 2025-26

Projected Prop 28 Allocations	\$345,287
→ Salaries & Benefits <ul style="list-style-type: none"> ◆ 2.0 FTE Art Teacher ◆ 0.75 FTE Art Paraeducator (Reduction of 0.75 FTE) 	\$345,287
→ Materials & Supplies	\$0
→ Administrative Cost	\$0
Projected Prop 28 Total Expenditures	\$345,287
CSD Base Contributions	\$0
Contributions for Materials & Supplies Expenses (H&SC Donations)	\$20,000
Projected Total Expenditures	\$365,287



2025-26

CSD Visual Art Program



- ❑ Two Week Rotation
- ❑ 14 - 15 Lessons
- ❑ 30 - 50 minutes depending on Grade Level Span
- ❑ Integrate Volunteer Program