

# **Cambrian JEDI**

**Justice, Equity, Diversity, Inclusion**

## **Multi-Tiered System of Supports**

**LCAP Goal 3 : Positive School Environment, Climate, and Culture**

Maggie Spehar, Director of Student Services  
November 3, 2022

# Agenda

---

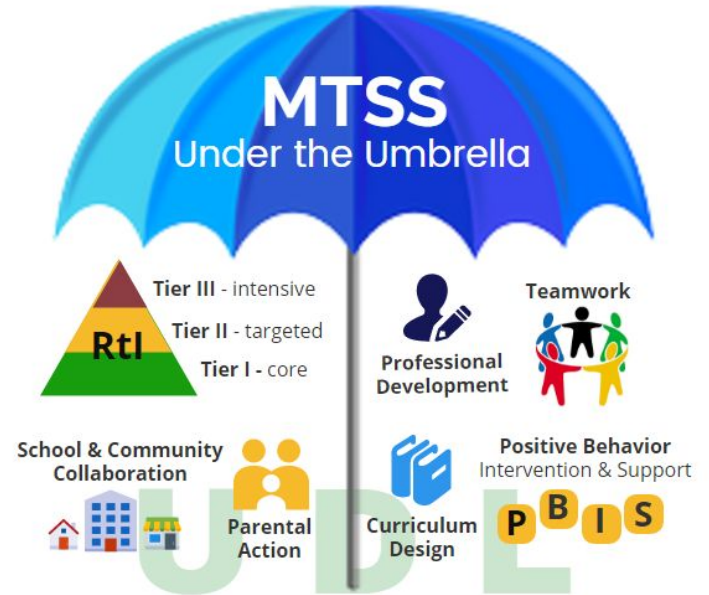


- MTSS in Cambrian
- Referral and Support Process
- MTSS: Behavior
- MTSS: Social Emotional Learning

# MTSS in Cambrian

---

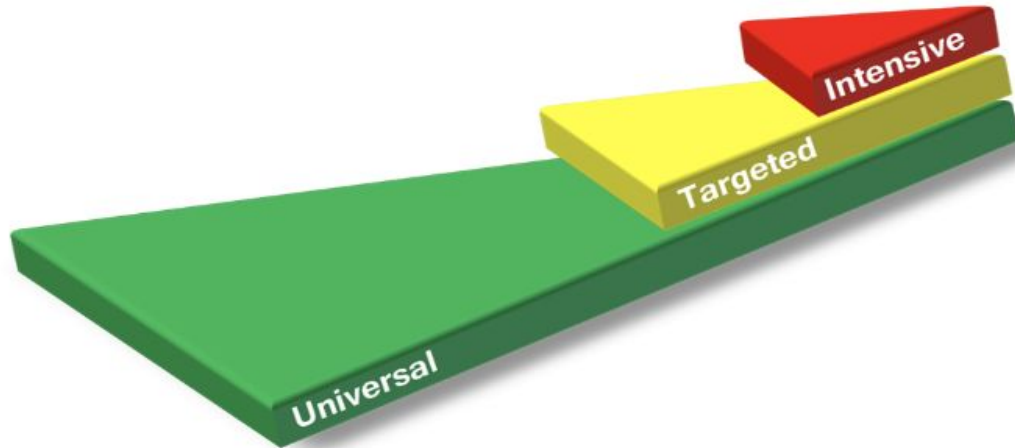
- All students are our students
- We personalize lessons and supports
- We design lessons for the students in front of us
- We create tools within the system to identify student and staff needs



# MTSS: Personalized Layered Support for Students

---

Changing models of support reflects the Response-to-Intervention model. They layer increasingly, to provide individualized support in the differentiated classroom.

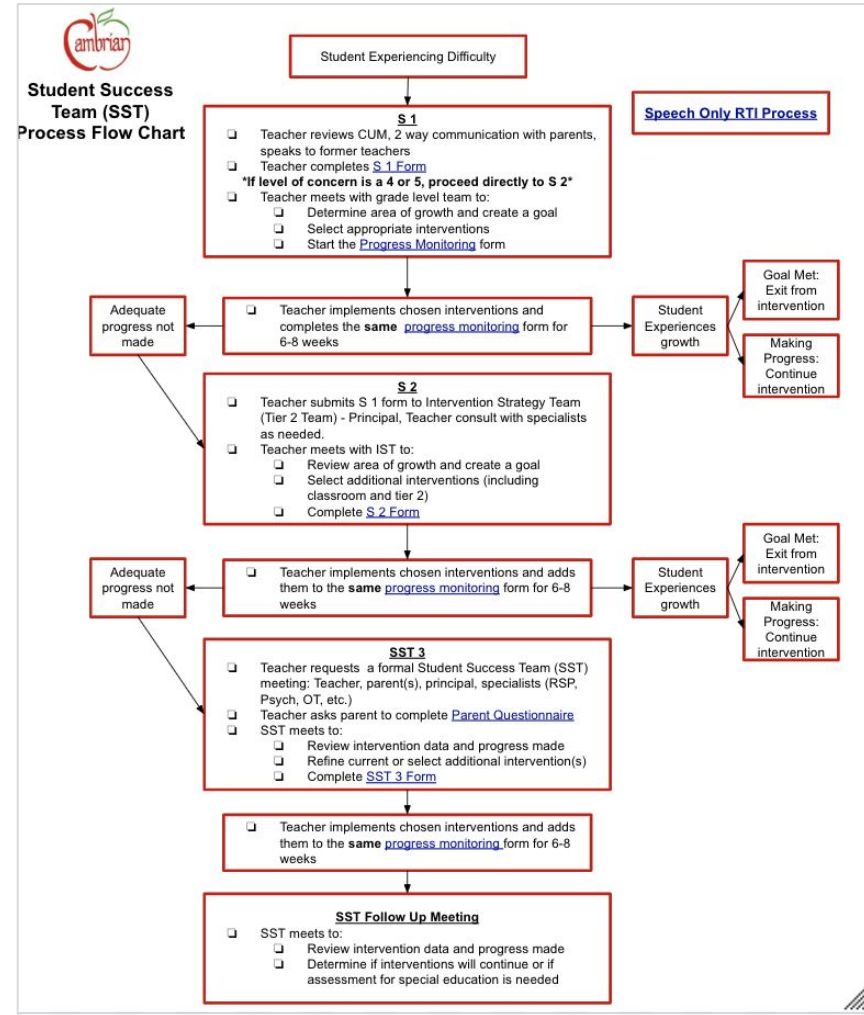


# MTSS: Behavior and SEL Layers

MTTS Layers	Universal/Tier 1	Targeted/Tier 2	Intensive/Tier 3
Behavior	PBIS Schoolwide Rewards SAEBRS Valley Sports	Check In Check Out SWIS Data Kelvin Observations by Specialists	Behavior Intervention Plan Soft start Wrap Services Assessment
Social Emotional Learning	Zones of Regulations Second Step Habitudes Project Cornerstone SAEBRS SEEDS	Counseling Social Skills Chill Room Wellness Room Kelvin Observations by Specialists	Soft Start Parent Consultation CareSolace Assessment

# Referral Process

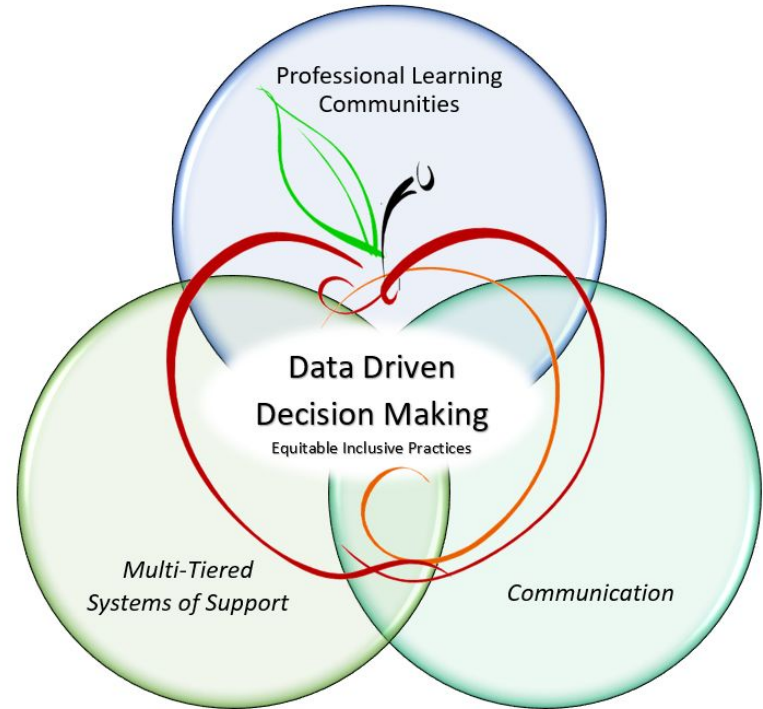
All tiered layers of support are reviewed and monitored over time to assess progress and its impact on individual student learning, access to learning, and educational benefit.



# Referral Process

---

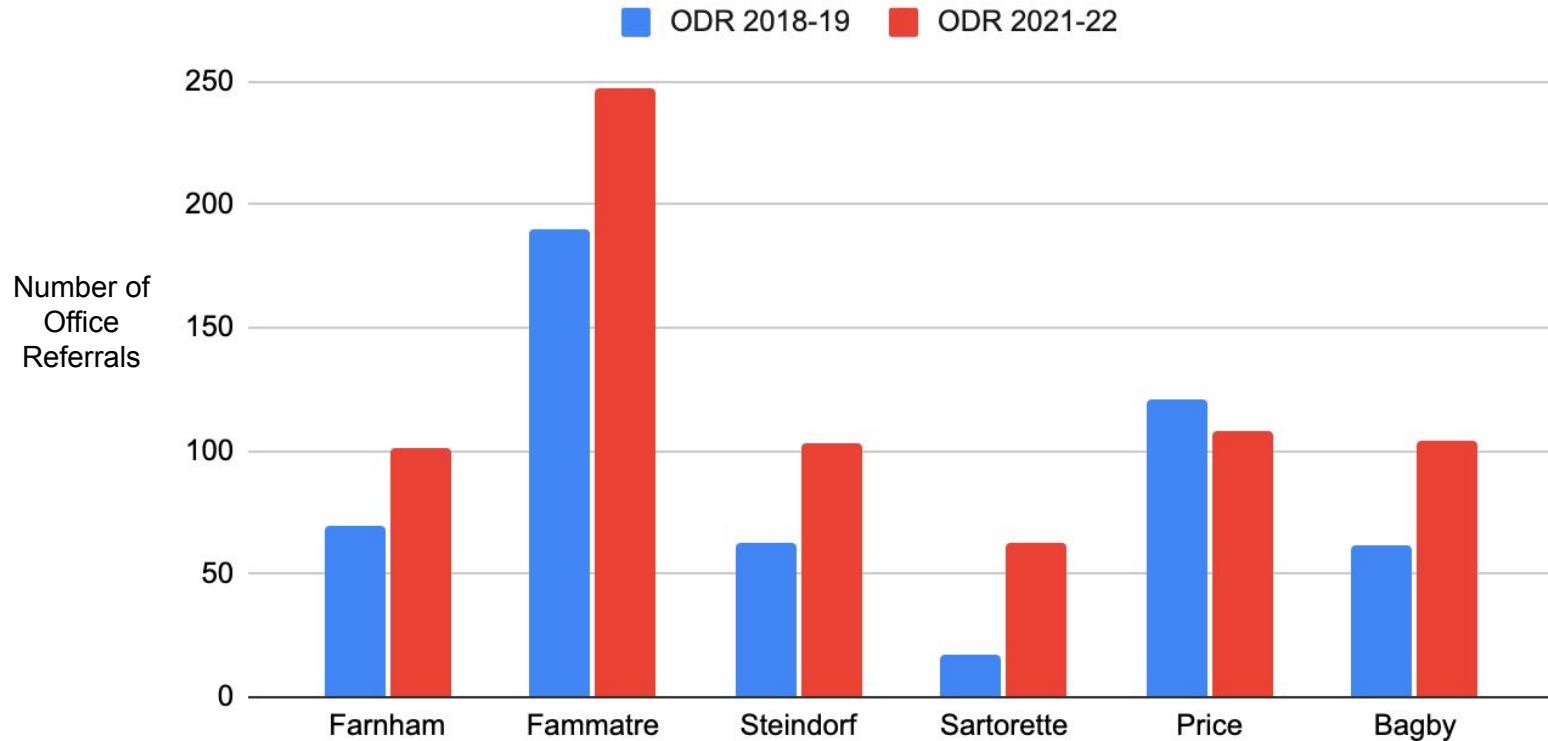
- Data based decisions to design, evaluate and implement supports for students.
- SST Process is a smaller professional learning community with one student at the center.



# MTSS: Changing Needs

---

## Office Discipline Referrals by School Site





# MTSS: Changing Needs

MTTS Layers	Universal/Tier 1	Targeted/Tier 2	Intensive/Tier 3
Behavior	PBIS Schoolwide Rewards SAEBRS <b>Valley Sports*</b>	Check In Check Out SWIS Data <b>Kelvin</b> <b>Observations by Specialists</b>	Behavior Intervention Plan Soft start Wrap Services Assessment
Social Emotional Learning	<b>Zones of Regulations*</b> Second Step Habitudes Project Cornerstone SAEBRS <b>SEEDS*</b>	Counseling Social Skills <b>Chill Room*</b> <b>Wellness Room*</b> <b>Kelvin*</b> <b>Observations by Specialists*</b>	Soft Start <b>Parent Consultation*</b> <b>CareSolace*</b> Assessment

*\*Added upon returning to in-person instruction*



# Questions & Discussion

Thank You