



Bagby Elementary

2021-2024 LCAP

Spring 2023 Update

Principal:

Michael
Kretsch

A graphic of a spiral-bound notebook with a white page and an orange border. The spiral binding is at the top. On the left side, there are two horizontal tabs: a red one on top and a light blue one below it. The page contains the number '01' in a blue circle, the text 'LCAP Goal #1' in red, and 'Student Academic Achievement' in black.

01

LCAP Goal #1

Student Academic
Achievement

Bagby 2021-2024 LCAP

How is Bagby and CSD measuring Academic Achievement in 2022-2023?

- **CSD Local Assessments (Sep, Jan, Mar)**
 - **FastBridge Assessments:**
 - **Reading, Math, SEL**
- **CA State Assessments (May 2023)**
 - **CAASPP, CAST, CAA**
 - **ELA, Math, Science (5th Grade)**

Bagby SBAC Historical Trends

ELA-% Met/Exceeded

<u>2016</u>	<u>2017</u>	<u>2018</u>	<u>2019</u>	<u>2022</u>
62%	62%	65%	62%	70%

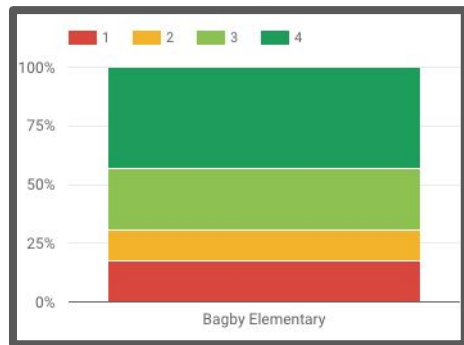
Math-% Met/Exceeded

<u>2016</u>	<u>2017</u>	<u>2018</u>	<u>2019</u>	<u>2022</u>
56%	55%	64%	67%	65%



Bagby SBAC 21-22 **ELA & Math (3rd-5th)** **Science (5th Only)**

ELA

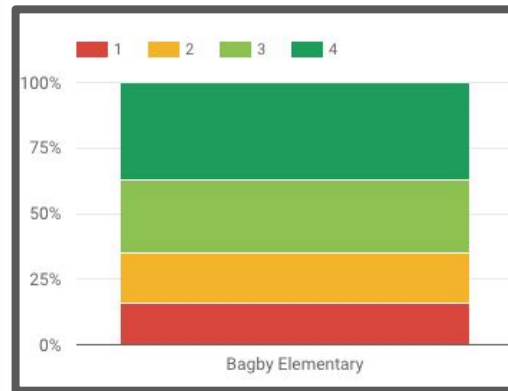


Bagby Elementary

- 1: 35 (17.24%)
- 2: 27 (13.3%)
- 3: 53 (26.11%)
- 4: 88 (43.35%)

Total: 203

Math



Bagby Elementary

- 1: 33 (16.02%)
- 2: 39 (18.93%)
- 3: 58 (28.16%)
- 4: 76 (36.89%)

Total: 206

Science



Bagby Elementary

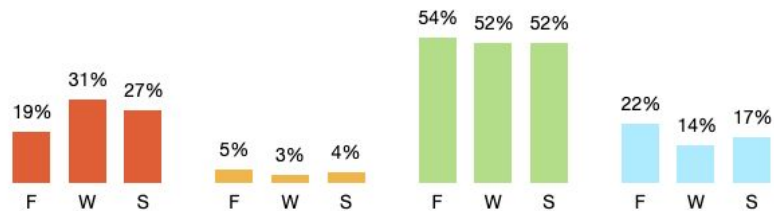
- 1: 4 (5.97%)
- 2: 32 (47.76%)
- 3: 19 (28.36%)
- 4: 12 (17.91%)

Total: 67

Bagby Fall 2022-Spring 2023

Early Reading (K-1)

Scores Of Students In Group By Normative Categories: ?



Bagby Fall 2022-Spring 2023

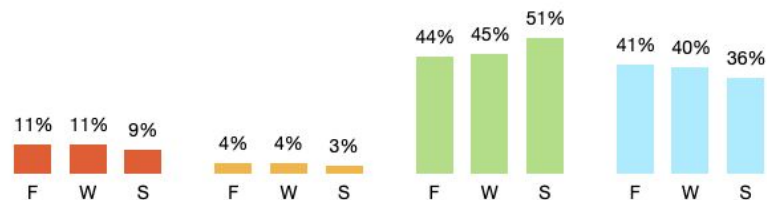
Early Math (K-1)

Scores Of Students In Group By Normative Categories: ?



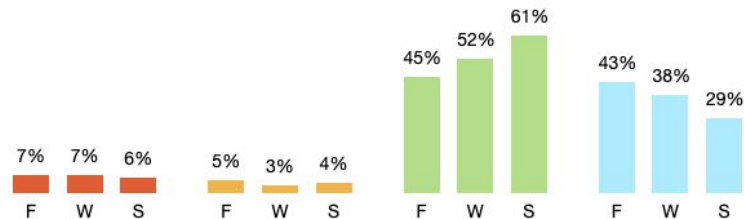
Bagby Fall 2022-Spring 2023 aReading (2nd-5th)

Scores Of Students In Group By Normative Categories: ?



Bagby Fall 2022-Spring 2023 aMath (2nd-5th)

Scores Of Students In Group By Normative Categories: ?



Bagby Bagby 2021-2024 LCAP

Goal #1: What is working well?

1. Grade Level Professional Learning Communities (PLCs)

- a. Principal, TOSA, Teacher leadership partnership in crafting session scopes
- b. Foundation established for grade level data driven collaboration
 - i. Teachers using data to monitor student learning and identifying strategic interventions
- c. Incorporation of Intervention (LLI, Phonics) Team in PLCs has increased collaboration, improved strategic interventions
 - i. Increasing capacity and all leading to higher graduation rates

2. Small Group Instruction/Classroom Interventions

- a. A focus of PLC as means to deliver essential intervention instruction in Classroom

3. Ed. Services Support & Guidance

- a. TOSA on-site/off-site support of:
 - i. Instructional practices (lesson modeling, curriculum expertise, new teacher support)
 - ii. On-going support for LLI & Phonics Intervention teachers and program
 - iii. Partnership in planning and delivering PLCs with Principal and site PLC leadership team

4. Tier II Strategic Intervention Team

- a. Better tailored interventions (LLI & Phonics) offered 22-23
- b. More students served, More students "graduated"

PLC Leadership Team Perspective

Michelle Makinson

Carolyn Sullivan

Margaret Ma



Bagby Tier II Interventions 22-23

GRADE LEVEL	Number of Students Participated	Number of students Graduated	Number of students Qualified for Sped	Graduation Percentage	English Language Learners	SED
First Grade	27	9	1	35%	5	8
Second Grade	14	11	1	84%	1	0
Third Grade	11	7	1	70%	1	1
Fourth Grade	9	6	0	66%	0	0
Fifth Grade	10	5	2	62%	2	2
TOTALS:	71	38	5	57%	9	11

Bagby Bagby 2021-2024 LCAP

Goal #1: Next Steps

1. Continue Cycles of Inquiry & Strategic Classroom Interventions

- a. Data driven, small group Tier 1 interventions (within classrooms)
- b. Addition of Math as area for focus/collaboration through PLCs
- c. Focus on supports for Hispanic/Latino & EL students due to persistent achievement gaps
 - i. Hispanic/EL-Medium on SBAC 2022
 - ii. White-High, Asian & Multiple Races-Very High on SBAC 2022

2. Regular Instructional Walkthroughs

- a. Implementation of standardized data collection tool
- b. Discussion of observed trends and next steps during staff meetings

3. Focus on GLAD Strategies-Support of ELD/All Students

- a. Regular Implementation in all classes

4. Provide release time for peer classroom visits-PLC Feedback

- a. Focused visits to observe instructional practices/interventions identified by grade levels during PLCs

5. ELD Strategic Intervention Program (Before/After School)

- a. Influx of newcomer students need as many opportunities as possible to be immersed in English language

6. Collaboration with Full-time Instructional Specialist

- a. On going support for above initiatives

Next Steps:



LCAP Goal #2

Staff Professional
Development, Recruitment,
& Retention

Staff LCAP Input Survey

State Priorities

- Basic Services:
 - Recruit & Retain Teachers-**95.0%**
- State Standards:
 - On going PD **65.0%**
- Parent Involvement:
 - Parent Education-**75%**
 - School/Community Supports-**75%**
- Student Achievement:
 - Extend learning opportunities-**75%**
- Student Engagement:
 - Expand enrichment-**75.0%**
- School Climate:
 - SEL-**70%**
 - Mental Health Supports-**70%**
- Course Access:
 - Access to Specialized Programs-**85%**
 - Improve Programs/Services for students with greater need-**85%**

State Priorities-Comments

- Basic Services:
 - "All teachers should be using the curriculum designated for our students."
- State Standards:
 - "Continual access to curriculum in a variety of languages to support EL students."
- Parent Involvement:
 - "workshops on Eureka for parents, and how to help with reading at home."
- Student Achievement:
 - "put a priority on the Science of Reading."
- Student Engagement:
 - "Continue to have Extended Day staff work with teachers to seamlessly offer support."
- School Climate:
 - "mental health, mental health, mental health"
- Course Access:
 - "Hire a certificated Art teacher."

Bagby Bagby 2021-2024 LCAP

Goal #2: Next Steps

Professional Development In:

1. Science of Reading
 - a. All instructional staff trained
2. Science Curriculum Piloting & PD for Adopted Science Curriculum
 - a. Widespread piloting
 - i. Varying grade levels & Comfort with Science
 - b. Following adoption (Winter 23)-robust PD in preparation for implementation beginning August 2024
3. GLAD Strategies-Support of ELD/All Students
 - a. Regular Implementation in all classes
4. Continuing On-Going PD/Support for FastBridge Interventions
 - a. Focused visits to observe instructional practices/interventions identified by grade levels during PLCs
5. Explore PD Opportunities to support Math Interventions in class
6. Collaboration with Full-time Instructional Specialist
 - a. On going support for above initiatives

Next Steps:



LCAP Goal #3

Safe School Climate,
Culture, and Learning
Environment

Bagby 2021-2024 LCAP

How is Bagby and CSD measuring Climate, Culture, and Learning Environment?

- **CSD Local Assessments Plan 22-23**
 - **FastBridge Assessments:**
 - SAEBRS (Teacher Evaluation)
 - MySAEBRS (2nd-5th Student Self-Eval.)
- **SWIS Data System**
 - Behavior Referrals
- **Spring 2023 School Climate Survey**

Bagby SAEBRS 22-23

Grade	Fall Score	Winter Score
KG	44	48
ONE	48	48
TWO	53	50
THREE	53	53
FOUR	48	51
FIVE	49	48

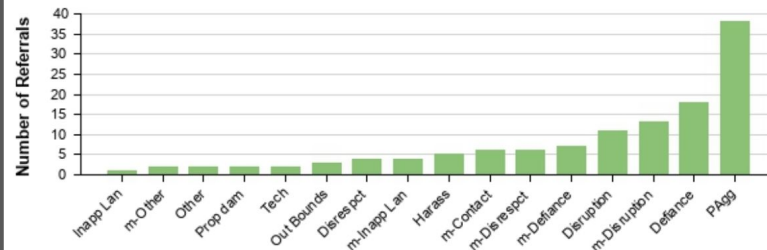
Bagby MySAEBRS 22-23

Grade	Fall Score	Winter Score
TWO	41	46
THREE	45	44
FOUR	42	44
FIVE	45	45

SWIS Data-Behavioral Referrals 22-23

Referrals by Behavior

All, Aug 1, 2022 - Apr 26, 2023



Bagby Bagby 2021-2024 LCAP

Goal #3: What is working well?

1. **Second Step Lessons (SEL)**
2. **Positive Behavior Intervention Supports Reboot**
 - SOTM Assemblies focused on Bagby Be's and Growth
 - Campuswide expectations being revamped with staff input and retaught
3. **Maintained Recess Support Ratios & VS Activities at Lunchtime Recess**
4. **Counseling Support**
5. **Collaboration with Stud. Services & HR**
 - Partnering to provide additional support services for students and teachers
6. **Volunteers/Programs**
 - Project Cornerstone, Art Vistas, Maker's Space Starting Arts
7. **Restarted Student Leadership/Advisory**
8. **School Community Events and Field Trips!**
 - Halloween Fun Night
 - 5th Grade Science Camp, Community Member Presentations
 - Special Olympics Events
 - Book Fair & Ice Cream Social, Family Movie Nights
 - Fun Run, Activity Day, Field Day, Promotion Ceremony & Reception



Spring School Climate Survey Results (3rd-5th)

Always/Often/Sometimes/Never

- I like going to school at Bagby-82.9%
- My teachers and Bagby staff want me to do well-98.0%
- I try my best to do well in school-93.3%
- Bagby has clear expectations for behavior-89.7%
- Good behavior is noticed at Bagby-65.0%
- Teachers/Staff Members treat me with respect-88.7%
- I get along with other students and have friends at Bagby-86.6%
- I feel safe at Bagby-83.6%
- Students treat each other well-64.4%
- There are adults at Bagby who will help me if I need it-86.6%
- I feel heard when I talk to a teacher or staff member at Bagby-76.3%
- I feel included at Bagby-78.4%

Spring School Climate Survey Results Programing Input

What enrichment activities do you like? Why?

- Lunchtime Sports-79.4%
- Music-77.3%
- Art Vistas-74.7%
- PE-62.9%
- Theatre/Drama-61.3%
- MakerSpace-54.6%
- Monthly Assemblies-28.9%

What kind of after school programs would you want at Bagby?

- Art-62.9%
- Science Experiments-55.2%
- Sports-50.5%
- Music-50%
- Lego Building-46.9%
- Coding-45.9%
- Languages-41.8%
- Makers Activities-41.8%

Bagby Bagby 2021-2024 LCAP

Goal #3: Next Steps-Building off the progress

1. **Complete PBIS Reboot**
 - a. Increase Being Safe, Responsible, Respectful, and Choosing Kind messaging around school
 - b. Create additional systems for acknowledging students making positive choices
2. **Continue monthly SWIS data updates during Staff meeting**
 - a. Identify trends and strategically reteach expectations as needed
3. **Lunchtime Activities**
 - a. Expanding alternative lunchtime activities to include library, indoor games, and STEM/Art related activities
 - b. Retain Valley Sports lunch time activities
4. **Supervision Staff**
 - a. Maintain present supervision ratios and provide additional support and training based on behavior trends
5. **Establishing Varied After School Opportunities (ELOP Funds)**
 - a. Surveyed Students & Community Spring 2023
6. **Chronic Absenteeism Support**
 - a. Work with Student Services to explore options in supporting chronic absenteeism in SED & SPED students/families
7. **Supports for High Level Student Behavior**
 - a. On-going partnership with CSDs Behavioral Specialists, Teachers, Families in support of behavior escalations





LCAP Goal #4

Community Engagement &
Participation

Community Climate Survey Results

Always/Often/Sometimes/Never

- My child likes school overall-**90.0%**
- My child feels included at school-**88.0%**
- I feel welcome coming onto campus-**90.0%**
- I am comfortable reaching out to staff-**89.7%**
- Satisfaction with Goal Setting Conferences-**92.0%**

Spring School Climate Survey Results **Areas for Improvement**

- Require Spring conferences or require follow-up to goal setting conferences
- School/CSD Newsletters NOT mobile friendly
- More advanced notice for volunteering-**32%**
- More flexible hours for volunteering-**30%**
- I feel that there are no barriers to me being able to volunteer-**54%**
- More cultural events-**62%**

What kind of after school programs would you want at Bagby?

- Sports, Coding, Languages, Cooking, Theatre, Arts

Bagby Bagby 2021-2024 LCAP

Goal #4: Next Steps-Building off the progress

1. Re-Examine how we welcome new families/students to Bagby
 - a. Explore alternatives for TK/Kindergarten orientation
 - b. Explore how HSC can welcome new families
 - i. Welcoming committee members
2. Explore bringing cultural celebrations in partnership with HSC
3. Survey Community (Spring 23) to learn what Parent information sessions are demanded
 - a. Parenting, Digital Citizenship, Supporting Reading & language acquisition
4. Revamp Website & Electronic Communication Tools
5. Exploring more effective family classroom/grade level communication to facilitate more social connections
 - a. ie. What's App Thread (Opt-In, Clear Expectations for use) to facilitate room parent, family to family communication for social connections
6. Work with Student Services to explore options in supporting chronic absenteeism in SED & SPED students/families



Next Steps:

**Thanks for opportunity to
update the community!**

Questions?

?